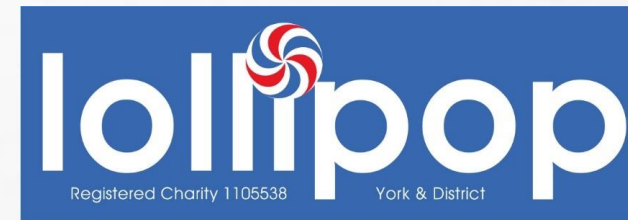


Lollipop newsletter

November 2020 - Issue 6



LOLLIPOP (YORK & DISTRICT)

Supporting children, young people and families with deafness

CONTENTS

- Meet our Ambassador, Professor Barry Wright
- The future of Lollipop...is in your hands!
- Lights, camera, action – be a video star!
- Sign at home with Cheryl – new BSL course
- Let's get Quizzical! – virtual quizzing fun!
- Lollipop in the news – read all about it
- Christmas raffle tickets – great prizes to be won!
- Every little helps – an easy way to show your support
- Fun & games – BSL Wordsearch & Alphabet



Note: There are lots of links in this newsletter. If you want to open them in a new window each time, hold down the Control key (or Command key on a Mac) whilst clicking on the link. Otherwise, just click back in your browser to return to the newsletter.

BSL video: <https://bit.ly/35ZyJ8T>

Meet our Ambassador



Professor Barry Wright
(Lollipop Ambassador)

Saturday 10 October was World Mental Health Day.

Professor Barry Wright is committed to improving outcomes for deaf children and their families all year round. He's the Clinical Lead for the National Deaf Child and Adolescent Mental Health Service.

The service supports deaf children facing psychological or emotional challenges and has 10 centres across England, one of which is in York.

Barry is also a Professor of Child Mental Health at the Hull York Medical School (University of York) and Leeds and York Partnership NHS Foundation Trust.

He runs a research centre developing and testing child-friendly supportive interventions for children ([COMIC – child-oriented mental health intervention centre](https://www.comic-uk.org/)).

BSL video: <https://bit.ly/3oUHl3l>

Latest research...

Barry and his team have recently carried out:

- a survey (with NDCS) of deaf children across the country on the emotional wellbeing of deaf children during COVID-19.
- a systematic review of research into parenting support after diagnosis and in the first 5 years of life.

He'd love to share the results with Lollipop members once finalised, so watch this space!



BSL video: <https://bit.ly/3oUHI3I>

Barry's message to our members...

"Covid has created hard times for all of society. It has created unique challenges for deaf children and their families.

A recent survey of deaf children that COMIC and NDCS have carried out shows that many deaf children feel isolated.

School closures mean they have had much less access to friends and learning opportunities. Many children describe challenges in communication.

The Government has been slow to provide easy access to see-through masks, so important for deaf people to be able to lip read and see facial expressions.

I have been proud to be associated with Lollipop who have worked hard to provide support to as many families as possible in as many ways as they can.

Let's all continue to pull together and work hard to make sure we support deaf children and families and to come through Covid learning lessons about companionship, communication and the important things in life."



Professor Barry Wright

BSL video: <https://bit.ly/36eskqL>

The future of Lollipop...



Penny McDonald - Chair

Lollipop has some important decisions to make.

Thank you to those of you who made it to the AGM last month to discuss the future of Lollipop.

We always value your feedback, but this year it's especially important due to the impact of COVID-19 and our current lottery funding coming to an end in April 2021.

Please help us make the right decisions for you and your family by completing a short poll. We have one version for parents/carers and one for youth members aged 11 and above.

Parent poll: www.surveymonkey.co.uk/r/XKK9WHS

Youth poll: www.surveymonkey.co.uk/r/XK2NSZ2

There's no official deadline but we'd like as much feedback as possible before the next Trustees' meeting so if you could complete the poll by **Friday 20 November**, we'd be really grateful!

DO YOU WANT LOLLIPOP TO CONTINUE? IF SO LET US KNOW.

You can also email any feedback to chair@lollipopryork.org.uk if you prefer.

BSL video: <https://bit.ly/3mMmseL>

Lights, camera, action...



**YOU, our members, are the best people to ask about the value of Lollipop.
Your words have so much more impact than ours ever could...**

Would you be willing to film a short video of you and/or your child talking about Lollipop and what it means to you?

We'd love to hear your thoughts. And if we get enough videos, we'll combine them to make a short promotional film for Lollipop! (provided you give consent for your video to be used in this way).

It would be a great way to raise awareness of Lollipop and provide first-hand evidence of the difference we make to our members.

Don't worry if you don't have a fancy video camera or you're unsure what to say!

Mobile phone/tablet footage will be absolutely fine and we've put together some simple questions to help you...

Please send your videos and any questions to mentor@lollipopyork.org.uk BSL video: <https://bit.ly/2Jtivxb>

Tell us in your own words...

Below are some simple questions to help you structure your **video feedback**.
But feel free to say whatever comes naturally if you prefer.



PARENTS/FAMILIES

1. How does being a member of Lollipop help your child?
2. How does being a member of Lollipop help you and your family?
3. Would you recommend Lollipop to other parents and families of deaf children - if so, what would you say?

MEMBERS

1. What do you like best about Lollipop?
2. How does being a member of Lollipop help you?
3. Tell us about a Lollipop activity you really enjoyed and why.
4. What would you say to other deaf children and young people thinking of joining Lollipop?

Please send your videos and any questions to mentor@lollypoppyork.org.uk BSL video: <https://bit.ly/2Jtivxb>

Sign at home with Cheryl

Lollipop are offering a 5-week BSL taster course - 'Sign at Home with Cheryl'.

The sessions will focus on family signs, items in the house, and everyday words, and in the last session (2 Dec) you will learn a signed Christmas song. The course is **FREE** to all Lollipop members and everyone who completes the course will receive a certificate.

A series of short, pre-recorded videos will be emailed to you weekly (every Wednesday):

- 4 November
- 11 November
- 18 November
- 25 November
- 2 December



Don't forget the next **Sparkle Jelly Tots** toddler group session is also taking place on Tues 17 Nov at 1:30pm – invitations will be sent by email.



Cheryl McBride
Parent Liaison Officer

You will automatically receive the video links if you are already subscribed to our emails. There will also be a chance to join a live practise session with Cheryl at the end of the course. This will be on Zoom on **Wednesday 9 December at 7pm** and you will need to book a place via Eventbrite.

For more information, please email info@lollipopyork.org.uk

BSL video: <https://bit.ly/3jWKUly>

Let's get Quizzical!.....



...with Lollipop's monthly virtual quiz. First session on Friday 20 November at 7pm.

Staying in is the new going out, so why don't you make a night of it and get the whole family involved?!

For those of you with a competitive streak, spread the word - anyone can join so you can take your friends on too!

The entry fee is just £3 with cash prizes to be won. Not only will you have lots of fun but you'll be supporting Lollipop at the same time, and in this current climate, we need it more than ever!

More details to follow but check out virtualquizevents.com for a sneaky peek!

BSL video: <https://bit.ly/2HUtlvs>

Lollipop in the news!

THE PRESS

“Don't make assumptions about people not wearing masks”

Do you remember the article about 'The Impact of Facemasks' in our [June Newsletter](#)?

Well, [York Disability Rights Forum](#) now have monthly column in the York Press and disability campaigner, Helen Jones, was asked to write an article about face masks and their implications for disabled people.

Lollipop was approached for comment on the impact of face masks on deaf people so we shared our thoughts - based on our own experiences and those of some of the people we work with.

The Press used a quote from Lollipop's very own Trustee, Helen Martin - Senior Teacher of the Deaf and Education Advisor to the [Ewing Foundation](#).

You can read her quote on the next page and the article in full here:

www.yorkpress.co.uk/news/18783468.dont-makeassumptions-people-not-wearing-masks/

BSL video: <https://bit.ly/35S6ed6>

Lollipop in the news continued...

"Face masks are a real problem for the children we work with.

For profoundly deaf children, they make it impossible to lip-read and for children who use BSL it makes communication really difficult because of not being able to see facial expressions.

For children with mild hearing loss, it's tricky too. Previously, they often wouldn't let on to their friends that they had hearing difficulties and would get by with lip-reading. Now with face masks, they have to tell their friends, and in some cases, they are finding this really hard.

We've tried visors, but some deaf children say they are just as bad - people get glare off them, so they can't lip read in the same way, and they distort the sound. We are advising schools to think about where students sit, be conscious of reducing the background noise in classes, be super deaf aware, use more visuals, and give a bit of support and leeway to deaf students."



Helen Martin

Lollipop Trustee, Senior Teacher
of the Deaf and Education
Advisor to the Ewing Foundation

Lollipop have some clear face masks that can help make communication easier. If you need one, please contact Deb at activities@lollipopyork.org.uk.

BSL video: <https://bit.ly/35S6ed6>

Christmas raffle tickets coming soon!

2020 has been the year that many activities and events have moved online, and our Christmas draw is no exception! This year we are having a raffle, with the draw live on Zoom on **Saturday 12 December** as part of our weekend of Christmas events!



Tickets will be available online soon and will be £1 each. Look out for the email and social media announcement in the next couple of weeks! The top prize will be **£100 CASH** and there will be **many other exciting prizes** to be won that have been donated by generous businesses in and around York.

There are a number of families who do an amazing job selling tickets each year and we hope selling them online will be just as easy for you. All you will have to do is forward a link to friends and family who you think might like to be in the draw.

Every ticket sold raises much needed funds for Lollipop at this difficult time and will help our Christmas raffle be full of fun and Christmas spirit for our members!

BSL video: <https://bit.ly/2HZmwJb>

Every little helps!

Did you know that you can give regularly to Lollipop via Virgin Money Giving?

Giving little and often makes it easier to afford and over time adds up to a huge amount of support for us. Below are just a few examples of where donated money is spent. You can choose to give any amount and whether you want it to be a one-off or regular donation.



£10.00 – goes towards virtual activities we've moved online to help children feel less isolated.

£20.00 – means our Parent Liaison Officer can provide remote support to families who are worried about their child's diagnosis.

£30.00 – contributes towards communication support which ensures our services are fully accessible.

We know times are hard but we would value your support if you can. To donate via Virgin Money Giving, click on the logo above or visit: <https://bit.ly/3o7xL2A>

BSL video: <https://bit.ly/35W7IJ6>

HALLOWEEN WORD SEARCH



Witch



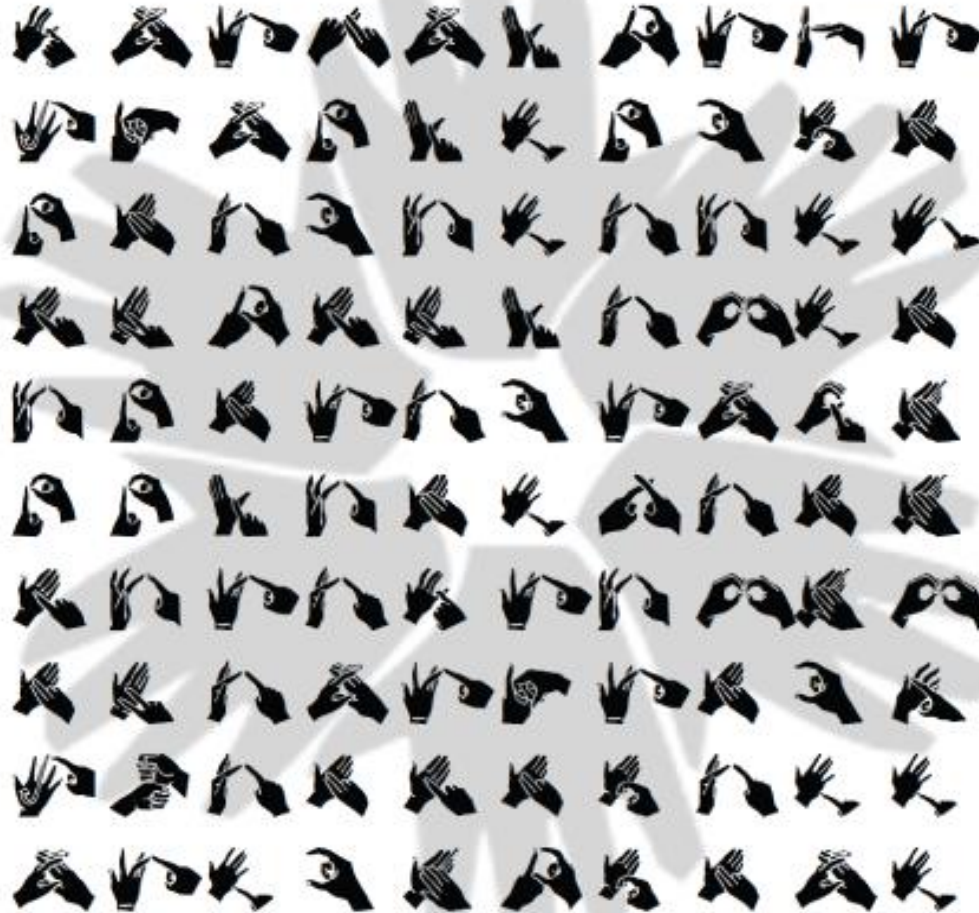
Bat



Skeleton



Cobweb



Fun & games

BSL Word Search

We've got a new puzzle for you this month courtesy of www.british-sign.co.uk

Can't sign? Don't worry.

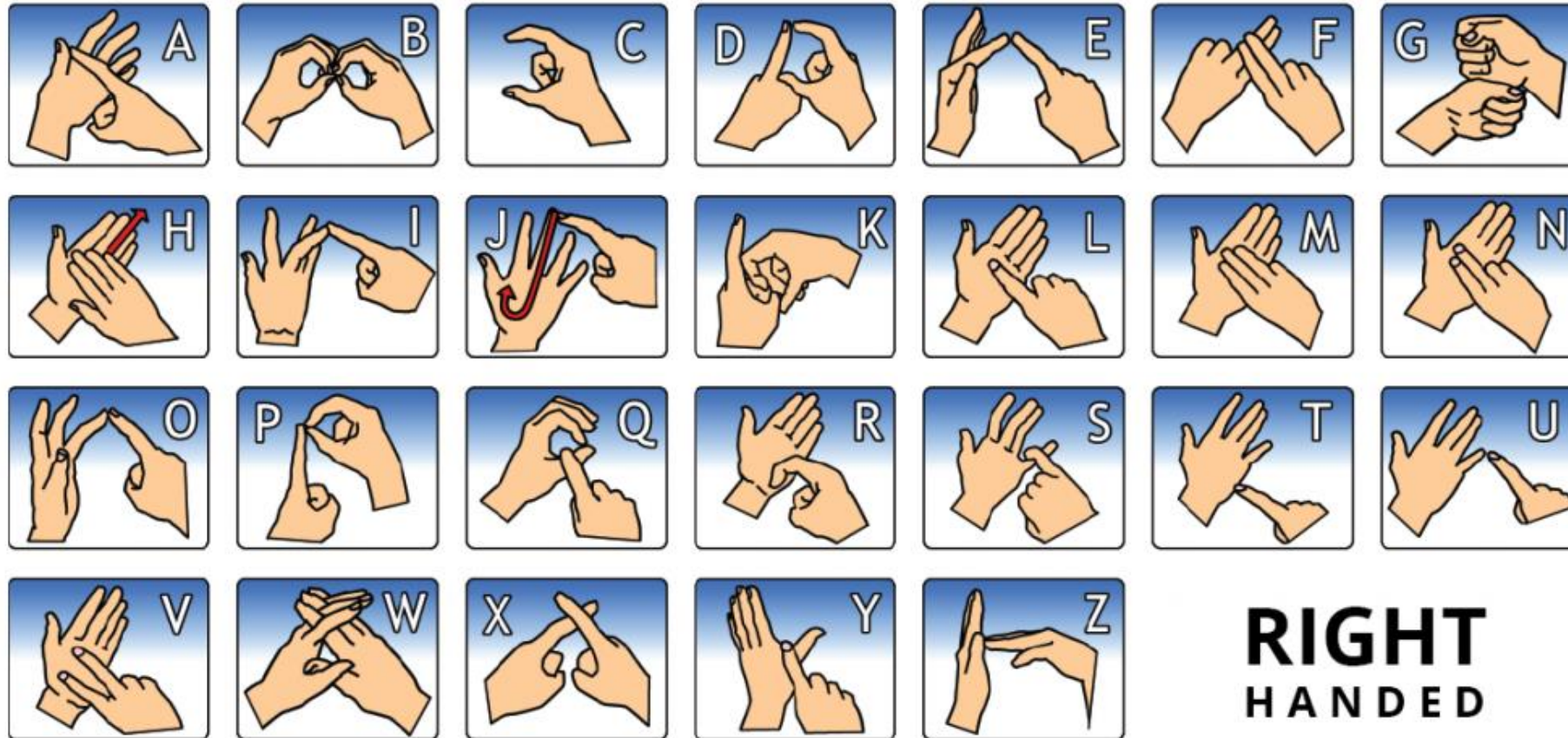
You can find the BSL alphabet for right-handers and left-handers at the back of this newsletter.

Why not give it a go?!

Answers to the hidden words puzzle in our October edition were:
COW, GUITAR, IOWA, LAUGH, ORANGE, WOW

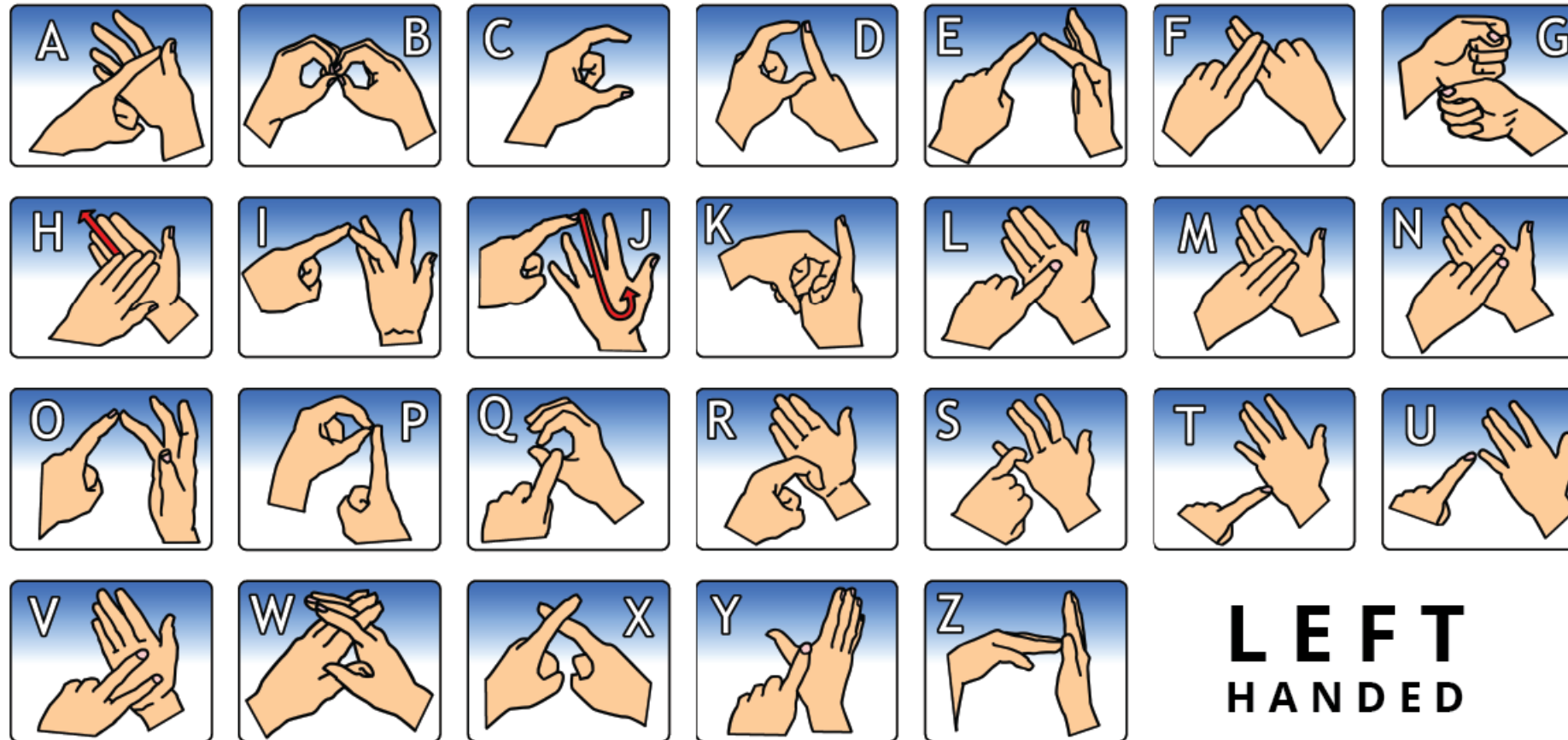
BSL video: <https://bit.ly/34SGr5C>

BRITISH SIGN LANGUAGE - FINGERSPELLING



If you are RIGHT-handed, follow these instructions. All the signs in the word search are right-handed signs.

BRITISH SIGN LANGUAGE - FINGERSPELLING



If you are LEFT-handed, follow these instructions but remember that the signs in the word search are right-handed.