

# Lollipop newsletter

March 2022 - Issue 17

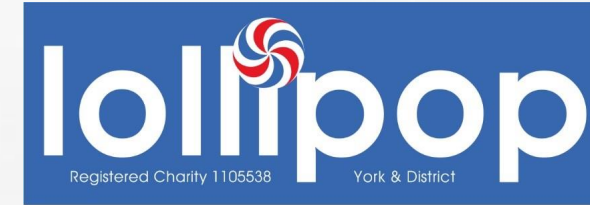


**LOLLIPOP (YORK & DISTRICT)**

Supporting children, young people and families with deafness

# CONTENTS

- Deaf Services Fair – see who's signed up
- St Crux fabulous fundraiser – easy ways you can help!
- Other dates for your diary
- Introducing our new volunteers
- Deaf Yorkshire Mum blog
- YorSensory service – local support for hearing/sight loss
- Deaf Identify designs for Comic Relief
- Fit ways to fundraise - are you up for a challenge?
- Community donations
- Pizza Party pics
- Fun & Games

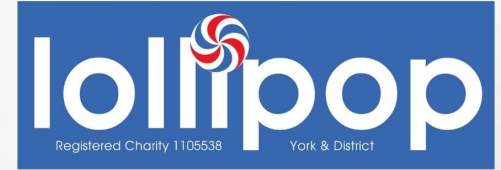


**Note:** There are several links in this newsletter. To open them in a new window, hold down the Control key (or Command key on a Mac) whilst clicking on the link.

Cover photo: Lollipop Deaf Services Fair coming soon – see inside for details

[BSL VIDEO](#)

# Deaf Services Fair



**WED 6 APRIL 2022 | 6–8PM | TEMPLE HALL, YORK ST JOHN UNIVERSITY**

**All the support and opportunities available for D/deaf people living in and around York in one place!**

Wow! We can't believe how quickly this term is going! One minute we're dreaming up ideas about a Deaf Services Fair for the local D/deaf community and now it's less than a month to go! Here's a list of the charities, organisations and services who have already signed up to take part:

- [City of York Council Teachers of the Deaf](#)
- [Ewing Foundation](#)
- [Healthwatch, York](#)
- [I Can Play / Music and the Deaf](#)
- [National Deaf Children's Society \(NDCS\)](#)
- [Ovingdean Hall Foundation](#)
- [Sign Video Services](#)
- [Toy Like Me](#)
- [Yorkshire BSL Interpreters](#)
- [YorSensory Service](#)



**There's still time to sign up if you or someone you know would like to host a stand at the fair.**

**Contact Heidi Davies for more information: [servicemanager@lollipopyork.org.uk](mailto:servicemanager@lollipopyork.org.uk)**

**WE LOOK FORWARD TO SEEING YOU THERE!**

**[BSL VIDEO](#)**



# St Crux fabulous fundraiser

**SAT 18 JUNE 2022 | 10AM – 4PM | ST CRUX PARISH HALL, PAVEMENT, YORK.**

**Calling all bakers, makers and volunteers for this super charity sale!**

Once again, we have the opportunity to fundraise at St Crux Parish Hall (at the bottom of the Shambles). See below for ways that you can help:

- **VOLUNTEER** – we need approximately 20 people on the day to help run stalls and serve refreshments in the café. Can you spare a morning, afternoon or even just a couple of hours?
- **BAKE** – cakes are always popular so we're calling on all our star bakers to work their kitchen magic and rustle up some tasty treats!
- **DONATE** – We sell all sorts at St Crux and gladly welcome any of the items listed in the box to your right. It's a great way to get rid of any unwanted Christmas presents or have a spring clear out!



Sale of books, DVDs, toys, plants, bric-a-brac, crafts, jewellery & more.

Plus a café serving delicious hot and cold snacks, drinks and cakes.

**All proceeds to Lollipop!**

Massive thanks in advance!  
Your support is really appreciated.

If you wish to volunteer, bake or donate, please contact Anna at [info@lollipopyork.org.uk](mailto:info@lollipopyork.org.uk)

**BSL VIDEO**

# Other dates for your diary!

## Gamelan Music Workshop



Join the [Sound of Bronze](#) and [Music and the Deaf](#) to explore Gamelan: a kind of music from Indonesia, played on beautiful bronze percussion instruments. This new and exciting workshop will be held on **Sun 13 March** at York's [National Centre for Early Music](#); **10am – Midday** for members aged 4-10 years and **1.30 – 3.30pm** for members up to 18 years – see email invitation for more info!

## Toddler Group



Have fun and make friends at our free, friendly toddler group! The next session will be held on **Wed 16 March, 10.30am – Midday** in the Discovery Room at [New Earswick Folk Hall](#) (Hawthorn Terrace, York, YO32 4AQ). Find out more at: [Lollipop Toddler Group](#)

## Climbing Wall



Scale the exciting, state-of-the-art climbing wall at [Clip N Climb \(York Leisure Centre\)](#) on **Wed 27 April, 5 – 6pm** – invitation with full details coming your way soon!

[BSL VIDEO](#)

# Welcome to our new volunteers!

We've been busy recruiting new volunteers and recently received a flurry of applications which is fabulous! While we crack on following those up we'd first like to introduce you to two students who joined us very recently! You may have met them during our trip to [Jorvik DIG](#) or at last month's [Pizza Express Pizza Party!](#)

AYUSHI



Originally from Mumbai, Ayushi is a Psychology graduate currently studying a Masters degree at the University of York.

She has varied volunteering experience including teaching, fundraising, play therapy and even setting up her own home-baking business!

She's very enthusiastic about working with and helping D/deaf children and young people at Lollipop!

ZOE



Cat lover Zoe is also at the University of York, studying an undergraduate degree in Social Work.

She has varied work experience in retail and hospitality and enjoys spending her free-time baking, reading and appreciating nature.

She would love to understand more about deafness and apply her customer service skills to helping out at Lollipop activities and events!

[BSL VIDEO](#)



# Deaf Yorkshire Mum blog

Earlier this year, we were contacted by a '[Deaf Yorkshire Mum](#)' seeking feedback on her new blog about her experiences as a person growing up with and living with deafness. Whether you're a young person struggling with deafness or a parent of a deaf young person, we hope you find Holly's honest and personal insights as helpful and interesting as we do!

*"Hello everyone! I'm Holly, a 25 year old photographer from York and I am a bilateral hearing aid user with moderate/severe deafness.*

*I have been going deaf since I was age 14 and have only just (in the last two years) begun to accept my hearing loss and feel confident wearing hearing aids out in public.*

*I have decided to start a blog to write about my experiences and my journey into what I now class as 'my deaf world' in the hope others can relate and find some comfort knowing they are not alone in what can feel like a very isolating world."*

## BLOG POSTS TO DATE...

1. [My Deafening World](#)
2. ["You don't look deaf"](#)
3. [To hear or not to hear...](#)

We will signpost Holly's new posts via our newsletter, blog and social media but if you would like to read them 'hot of the press', why not follow her at:

<https://deafyorkshiremum.uk/>

[BSL VIDEO](#)

# YorSensory Service



**Yorsensory is a service commissioned by City of York Council and provided by the Wilberforce Trust. It offers support, Sensory Impairment Assessments, rehabilitation, equipment demonstrations, training, information and advice for adults with sight loss, hearing loss or both in York.**

Their team combine their experience, skills, and knowledge to identify individual sensory needs, risks and challenges, support positive outcomes and increase independence/safety. They also provide an Outreach Service run by Paul Senior (himself profoundly Deaf) who goes out into the community to offer advice, support and raise awareness of the service so it can reach more people.

It's an exciting time within the Trust and the team. They are currently working on projects with university students, school children and the wider community, and awaiting the handover of 'Wilberforce House' – a specialist extra-care housing scheme designed especially for people with a visual impairment and other disabilities. This will be the first of its kind for York and the surrounding areas.

As well as 30 one-bed open plan apartments, it will be home to a Living & Learning Zone (providing education, leisure and support activities), a Courtyard Café, the new base for their Head Office staff and, most excitingly, their new **YORSENSORY HUB!**

[BSL VIDEO](#)



# Find out more...

If you would like more information about how the Yorsensory Service can help, contact them at:



01904 202292



[enquiry@yorsensory.org.uk](mailto:enquiry@yorsensory.org.uk)



[THE WILBERFORCE TRUST](#)



[@TheWilberforceTrust](#)



[@WilberforceYork](#)



[wilberforcetrust](#)

Or pop down to chat to them at our [Deaf Services Fair](#) next month!

[BSL VIDEO](#)

# Deaf Identity designs for Comic Relief

COMIC  
RELIEF

Luke Christian, owner and founder of clothing brand [Deaf Identity](#) has designed charity merchandise for this year's [Comic Relief](#).

Luke is one of 11 artists to partner with retailer TK Maxx to raise funds for the charity. He has designed a notebook and three t-shirts as part of the official collection, which are available to buy at any TK Maxx store and online at [tkmaxx.com](https://tkmaxx.com).

In [a post on Instagram](#), Luke said it was “such a surreal moment” in his career and that he was “honoured” to be approached.

*“Comic Relief have helped so many deaf charities and projects over the years and I’m thrilled to be featured amongst 10 other incredible artists within such a diverse line-up! I wanted my designs to represent my own deaf and queer identity by showing the word ‘Love’ in British Sign Language in a minimalistic style and I’m beyond excited about raising deaf awareness and showing the world how positive being deaf really is”* – **Luke Christian**



Luke Christian – Deaf Identity

[BSL VIDEO](#)

# Calling all sporting heroes and adrenaline junkies!

**Are you thinking of doing a skydive, running a marathon, or having a go at Yorkshire Three Peaks, Tough Mudder or Yorkshire Warrior?** We're on the look out for supporters willing to take on a crazy or daring fitness challenge on behalf of Lollipop! If you're doing something this year (or thinking about it), please consider fundraising for Lollipop at the same time!



Left to right: [Mario's skydive](#), [Christian's half marathon](#), [Luke's Cyclothon](#), [Heidi's Swimathon](#), [York Rotary Club Dragon Boat Race](#)

**We'll help promote your campaign so you can raise as much as possible. And we'll feature you in our newsletter and on our website as a fundraising hero!**

If you'd like to fundraise on behalf of Lollipop or would like to find out more, please email Becky at: [admin@lollipopryork.org.uk](mailto:admin@lollipopryork.org.uk)

**[BSL VIDEO](#)**



# Community donations

## KEY CARE



[Keycare](#) have kindly sent us a cheque for £573.

This will cover the costs of our Escape Room trip in May including a tasty supper at Pizza Hut!

More details coming soon!

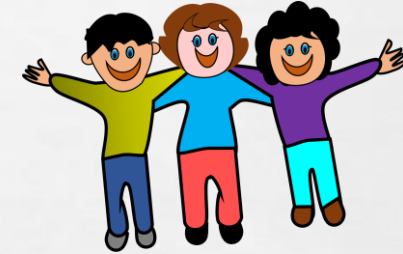
## COMPANTHORPE YCA



Last month, Lollipop Chair (Laura) and Fundraising & Admin Officer (Becky) went to give a talk about Lollipop to the Copmanthorpe branch of the [Yorkshire Countrywomen's Association](#).

The group kindly presented Lollipop with a donation of £77.00.

## FRIENDS OF LOLLIPOP



- Holly Brighton (creator of the [Deaf Yorkshire Mum](#) blog) has raised £60 for Lollipop
- Bobby Harris's grandma in Australia has donated £110
- Roseanne Sadler has sent us a cheque for £100

**Thank-you to ALL our supporters. We couldn't do what we do without you!**

**[BSL VIDEO](#)**

# Pizza party pics!



On 13 February the wonderful staff at the Designer Outlet Pizza Express welcomed our members to an exclusive pizza party! Here they are making their own delicious creations!



Left to right: Juniors – Simas, Marina, Olivia and Samuel; Youths – Ethan, Grace, Molly and Holly

[BSL VIDEO](#)





Here they all are learning how to toss pizza dough and add their favourite pizza toppings, before finally getting to eat the fruits of their labour! Yum!





# Fun and games

## Hidden words puzzle

Can you find all 6 words hidden in this spring scene?

We'll reveal the answers in our next newsletter...

**GOOD LUCK!**

Answers to last month's Valentine's puzzles on the next page...

[BSL VIDEO](#)

# Valentine's Fun

Did you solve the love maze in our February edition?

Well done if you figured out the route from top to bottom shown here...

## VALENTINE'S QUIZ ANSWERS

What date is Saint Valentine's Day? **14 February**

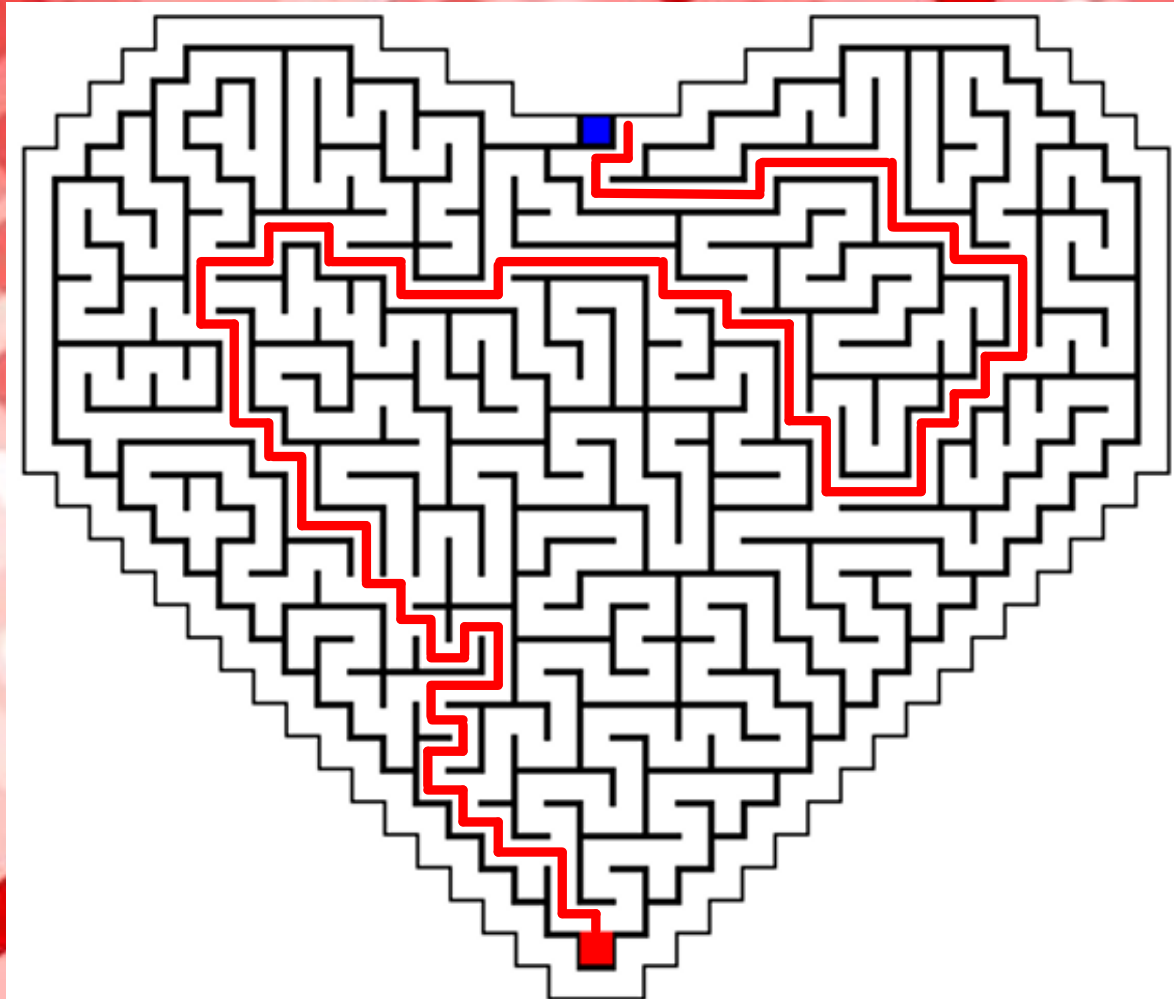
What flower is traditionally given on Valentine's Day?  
**Red Rose**

Who is the Roman God of Love? **Cupid**

Saint Valentine is the Patron Saint of Love and what else? **Beekeepers and Epilepsy**

How do you sign 'I Love You' in BSL?

<https://www.signbsl.com/sign/i-love-you>



THANKS FOR READING...SEE YOU NEXT MONTH!

[BSL VIDEO](#)